

KONNER

2024

NUMERICAL
PRECISION
IS THE
VERY SOUL
OF SCIENCE



KONNER

STEALTH



KONNER

KONNER

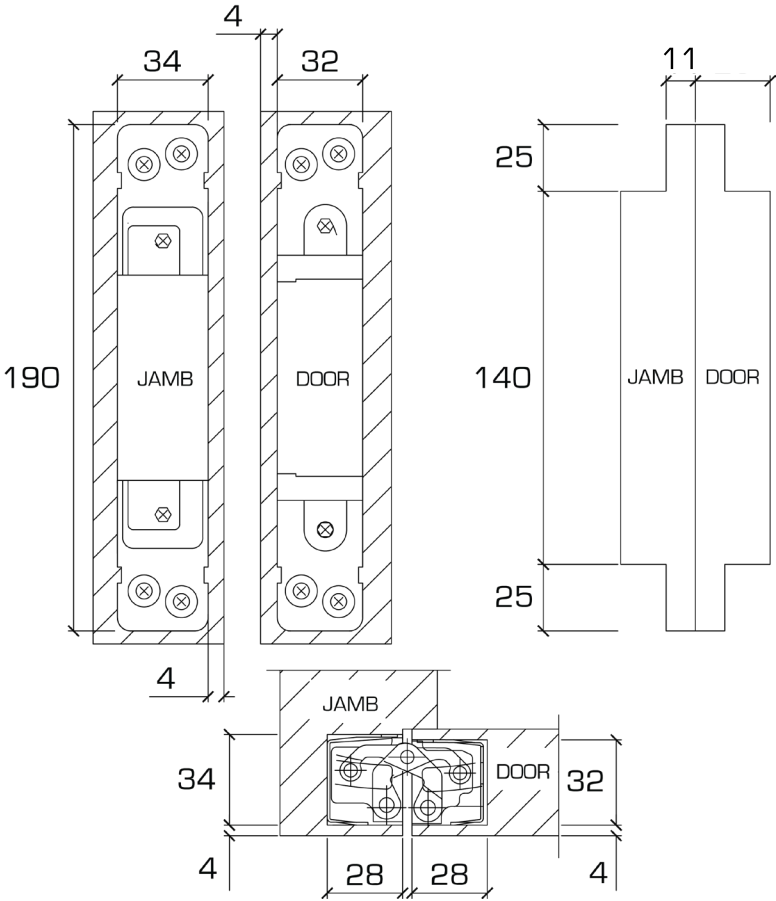
STEALTH 100

CONCEALED HINGE



- **CONCEALMENT:**
DESIGNED FOR FLUSH DOORS, COMPATIBLE WITH WOOD, STEEL, AND ALUMINUM FRAMES FOR A SEAMLESS APPEARANCE.
- **ADJUSTABILITY:**
OFFERS THREE-DIMENSIONAL ADJUSTMENTS FOR PRECISE ALIGNMENT - LATERAL MOVEMENT (+/- 5.0 MM), VERTICAL HEIGHT (+/- 5.0 MM), AND DOOR COMPRESSION (+/- 1.0 MM).

LOAD CAPACITY	: 100 KG
LENGTH	: 190 MM
WIDTH	: 34/32 MM
THICKNESS	: 28 MM
MINIMAL DOOR THICKNESS	: 40 MM
OPENING ANGLE	: 180°
COMPOSITION	: ALUMINIUM
FINISHING	: RAVEN





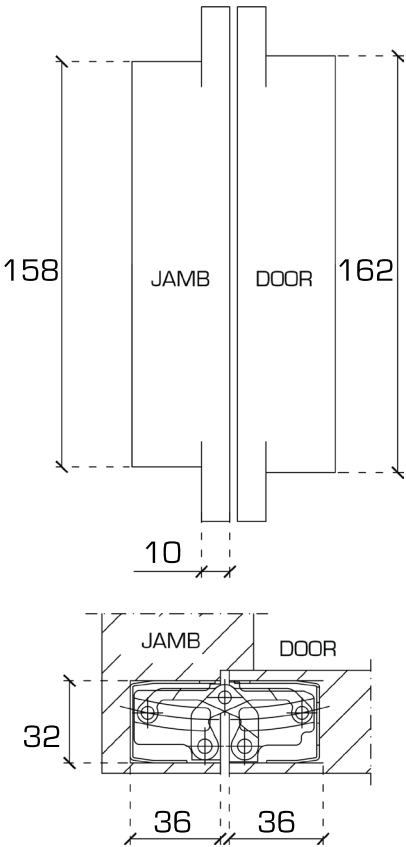
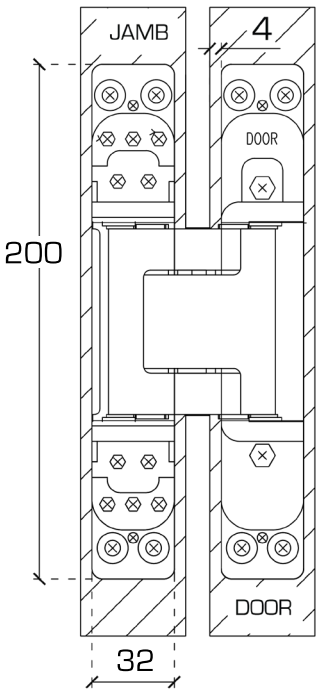
STEALTH 150

CONCEALED HINGE



- **CONCEALMENT:**
DESIGNED FOR FLUSH DOORS, COMPATIBLE WITH WOOD, STEEL, AND ALUMINUM FRAMES FOR A SEAMLESS APPEARANCE.
- **ADJUSTABILITY:**
OFFERS THREE-DIMENSIONAL ADJUSTMENTS FOR PRECISE ALIGNMENT - LATERAL MOVEMENT (+/- 5.0 MM), VERTICAL HEIGHT (+/- 5.0 MM), AND DOOR COMPRESSION (+/- 1.0 MM).

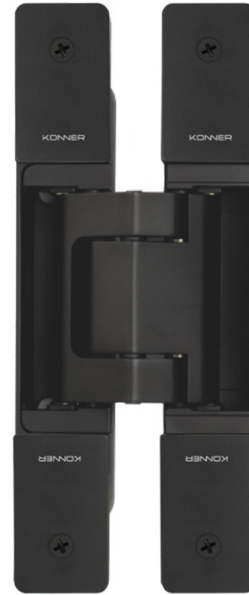
LOAD CAPACITY	: 150 KG
LENGTH	: 200 MM
WIDTH	: 32 MM
THICKNESS	: 38 MM
MINIMAL DOOR THICKNESS	: 45 MM
OPENING ANGLE	: 180°
COMPOSITION	: ALUMINIUM
FINISHINGS	: ANTIQUE RAVEN STERLING MIDAS



KONNER



ANTIQUE



RAVEN



STERLING



MIDAS



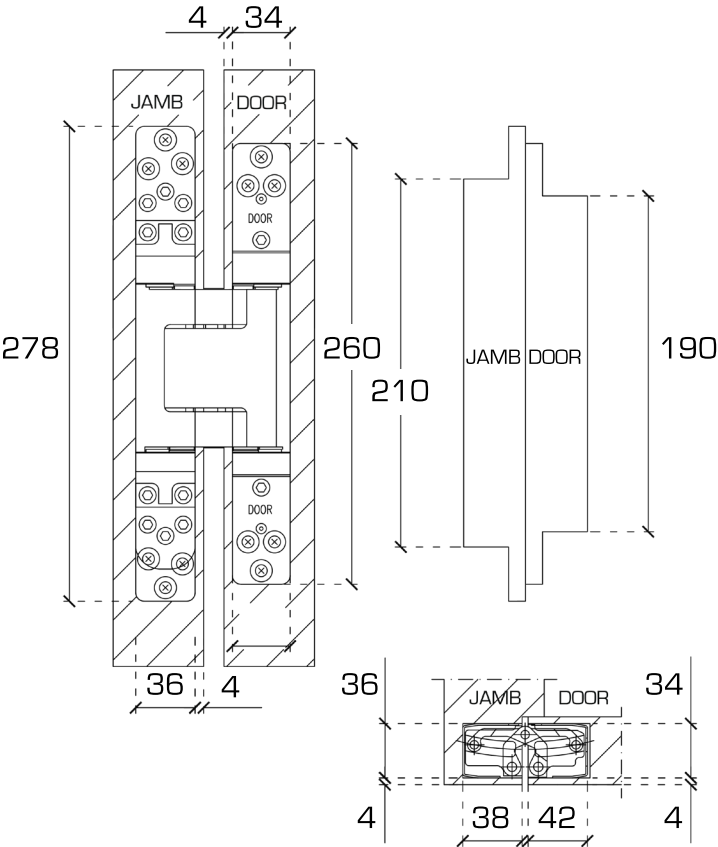
STEALTH 300

CONCEALED HINGE



- **CONCEALMENT:**
DESIGNED FOR FLUSH DOORS, COMPATIBLE WITH WOOD, STEEL, AND ALUMINUM FRAMES FOR A SEAMLESS APPEARANCE.
- **ADJUSTABILITY:**
OFFERS THREE-DIMENSIONAL ADJUSTMENTS FOR PRECISE ALIGNMENT - LATERAL MOVEMENT (+/- 5.0 MM), VERTICAL HEIGHT (+/- 5.0 MM), AND DOOR COMPRESSION (+/- 1.0 MM).

LOAD CAPACITY	: 300 KG
LENGTH	: 280/260 MM
WIDTH	: 32 MM
THICKNESS	: 41,5 MM
MINIMAL DOOR THICKNESS	: 45 MM
OPENING ANGLE	: 180°
COMPOSITION	: ALUMINIUM
FINISHINGS	: ANTIQUE RAVEN STERLING MIDAS



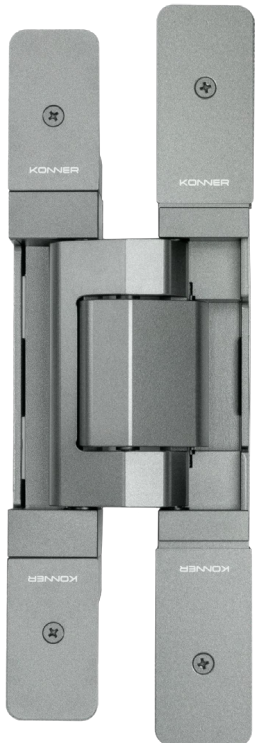
KONNER



ANTIQUE



RAVEN



STERLING



MIDAS



KONNER
TITAN



TITAN

MARINE GRADE BUTTERFLY HINGE

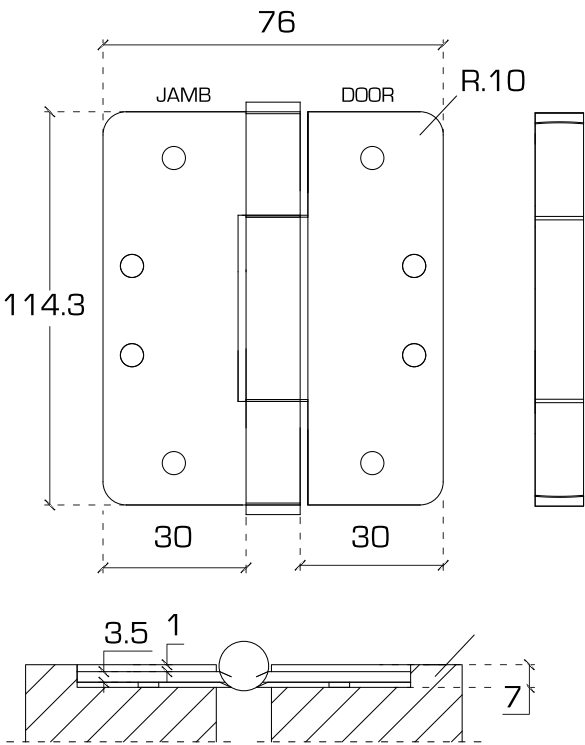


LOAD CAPACITY	: 160 KG
LENGTH	: 114,3 MM
WIDTH	: 76,2 MM
THICKNESS	: 63 MM
MINIMAL DOOR THICKNESS	: 36 MM
OPENING ANGLE	: 180°
COMPOSITION	: STAINLESS STEEL 316
FINISHINGS	: RAVEN ANTIQUE MIDAS STERLING TOPAZ PLATINUM

THE ELEGANCE BESTOWED WITH 160KG HI-LOAD TECHNOLOGY.

SS316.
INCORPORATING AN ADDITIONAL COMPOUND NAMED MOLYBDENUM, TITAN USES STAINLESS STEEL GRADE 316, WHICH GREATLY INCREASES ITS RESISTANCE TO CORROSION. SUCH LEVELS OF CORROSION RESISTANCE ALLOW PARTNERS TO HAVE GREATER CONFIDENCE WHEN USING THE TITANS, EVEN AT WATERFRONT RESIDENCES.

HI-LOAD.
IT DOES NOT JUST LOOK GOOD, BUT IT WORKS WELL. TITAN INCORPORATES HI-LOAD TECHNOLOGY, ALLOWING IT TO WITHSTAND ADDITIONAL LOADS BEYOND HINGES OF ITS SIZE. A KEY DESIGN REQUIREMENT WAS ALSO TO BUILD HARDWARE WHICH IS



KONNER



RAVEN



ANTIQUE



MIDAS



STERLING



TOPAZ



PLATINUM

KONNER

Cold Steel

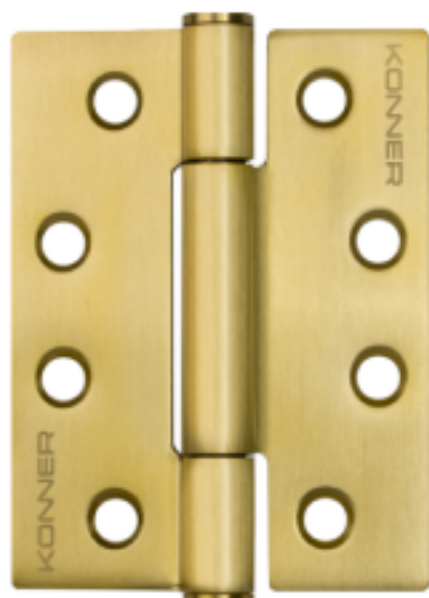


KÖNIG

KÖNIG

Cold Steel

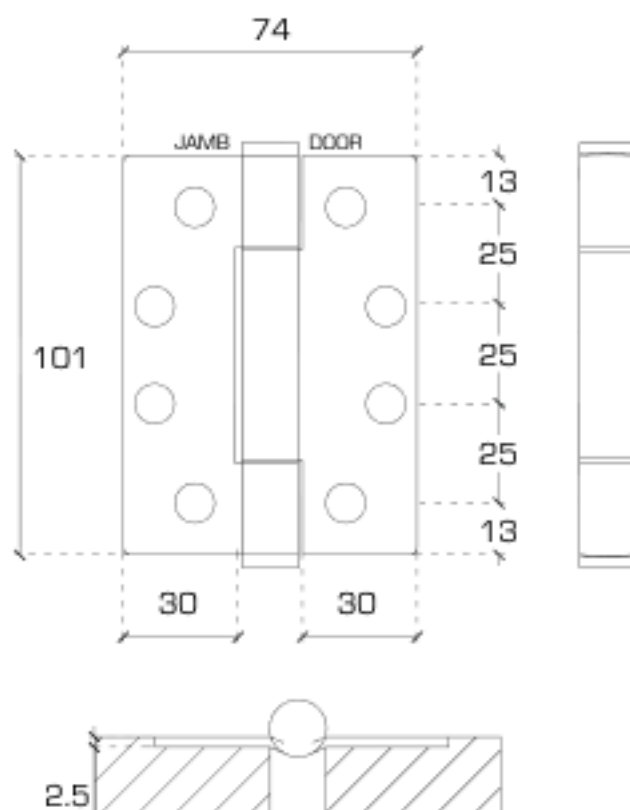
BUTTERFLY HINGE



LOAD CAPACITY	: 120 KG
LENGTH	: 101 MM
WIDTH	: 74 MM
THICKNESS	: 3 MM
MINIMAL DOOR THICKNESS	: 35 MM
OPENING ANGLE	: 180°
COMPOSITION	: STAINLESS STEEL 304
FINISHINGS	: ANTIQUE RAVEN MIDAS STERLING TOPAZ PLATINUM

SYMBOLIZE TIMELESS OPULENCE AND TOP NOTCH PRACTICALITY.

MADE WITH STAINLESS STEEL IN UK, COLD STEEL ARE DESIGNED TO ENHANCE THE OVERALL LOOK OF DOOR HARDWARE. THE BEARING ARRANGEMENT IN COLD STEEL ACCOUNT FOR BOTH VERTICAL AND LATERAL LOADS UP TO 120KG. IN CONJUNCTION WITH THE VARIOUS COLOR FINISHINGS, COLD STEEL DELIVER UNRIVALLED PERFORMANCE ON BOTH BEAUTY AND FUNCTIONALITY.



KONNER



ANTIQUE



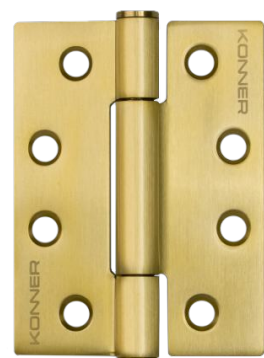
RAVEN



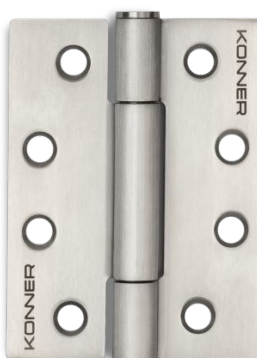
MIDAS



STERLING



TOPAZ



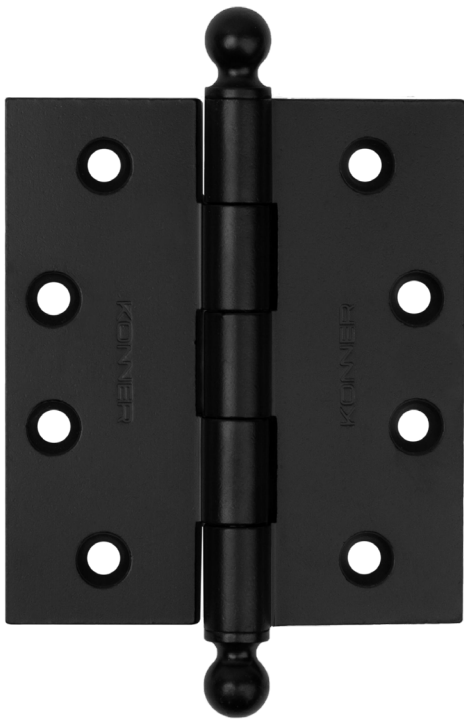
PLATINUM

KONNER
athena



athena

BUTTERFLY HINGE



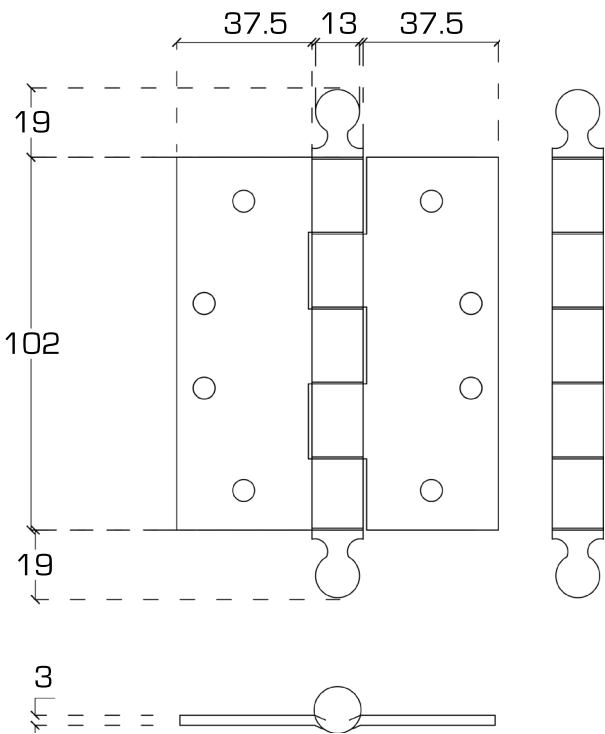
LOAD CAPACITY	: 120 KG
LENGTH	: 102 MM
WIDTH	: 37,5 MM
THICKNESS	: 3 MM
MINIMAL DOOR THICKNESS	: 36 MM
OPENING ANGLE	: 180°
COMPOSITION	: BRASS
FINISHINGS	: STERLING MIDAS RAVEN RUST

A BOLD STATEMENT IN DESIGN

THE JOURNEY OF KONNER BEGAN WITH A SINGULAR, YET PROFOUND REQUEST FROM A DESIGNER: “CAN ALL THE DOOR HARDWARE EXHIBIT A UNIFIED TONE?” THIS SIMPLE QUESTION SPARKED A REVOLUTION. THE RESULT? A METICULOUSLY CRAFTED PALETTE OF COLORS – BLACK, UMBER, BRASS, SATIN – EACH IN PERFECT HARMONY WITH HINGES, LOCKS, BOLTS, HANDLES, LATCHES, AND CYLINDERS. IMAGINE A DOOR, NOT JUST AS AN ENTRYWAY, BUT AS A TESTAMENT TO SINGULAR TONAL BEAUTY.

PRECISION ENGINEERING AND SEAMLESS FINISHING

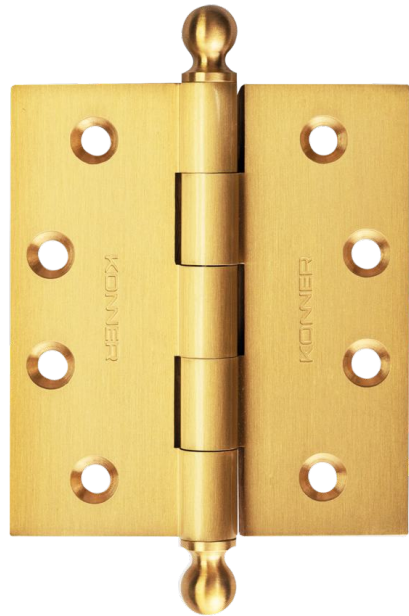
PRECISION IS KEY IN ATHENA'S CREATION. UTILIZING ADVANCED CNC PROCESSING, WE ACHIEVE A LEVEL OF PRECISION AND SEAMLESS FINISHING THAT TRANSCENDS THE NEED FOR TRADITIONAL BALL BEARINGS. THE RESULT IS A HINGE THAT IS NOT ONLY A VISUAL TRIUMPH BUT ALSO A PINNACLE OF FUNCTIONALITY AND DURABILITY.



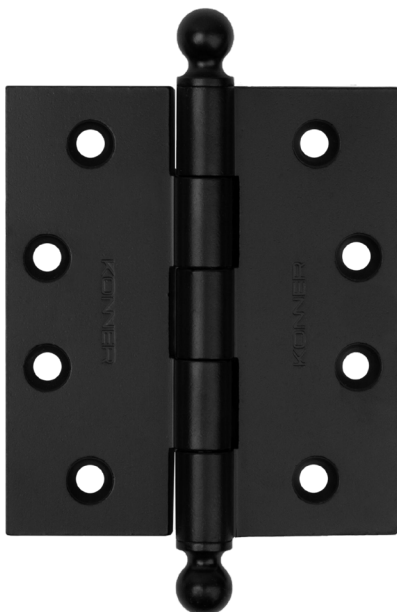
KONNER



STERLING



MIDAS



RAVEN



RUST

KONNER
BÖLT

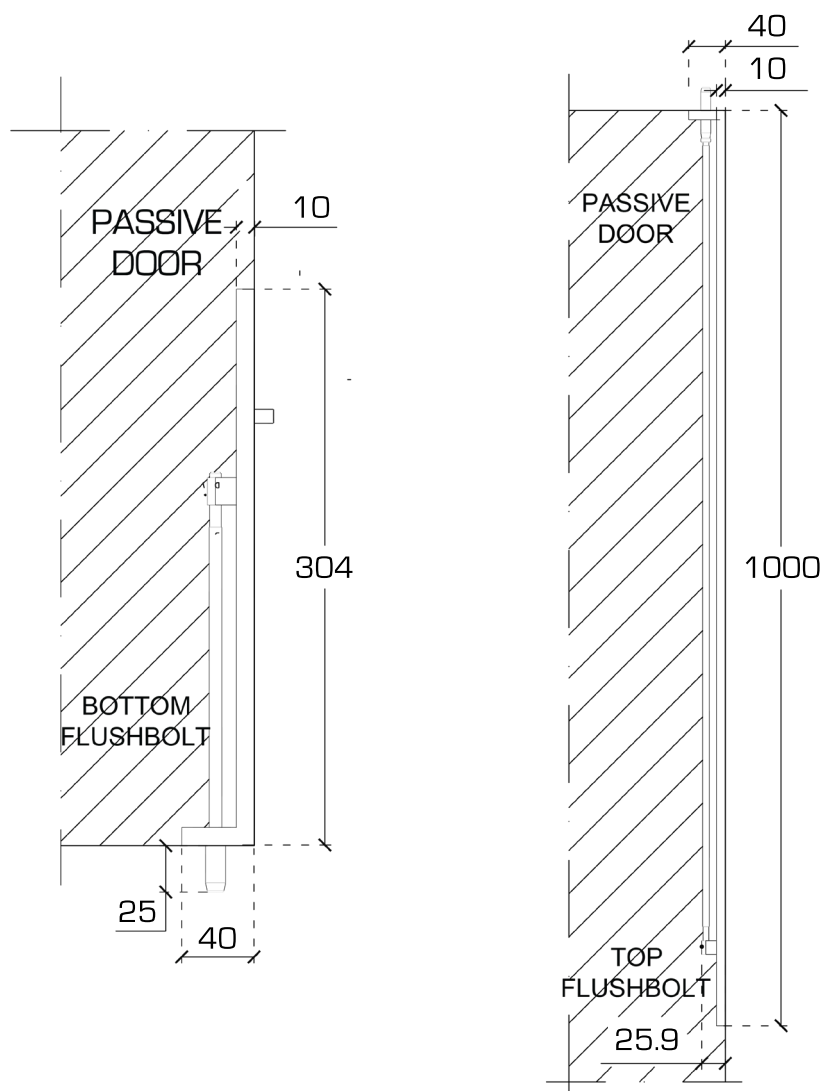


BOLT

BRASS FLUSHBOLT FOR DOUBLE DOORS

KONNER

	BOLT 300	BOLT 1000
LENGTH	: 300 MM	1000 MM
WIDTH	: 25,4 MM	25,4 MM
THROW LENGTH	: 25,4 MM	25,4 MM
THROW DIAMETER	: 11 MM	11 MM
COMPOSITION	: BRASS	BRASS
FINISHING	: RAVEN, MIDAS, STERLING	RAVEN, MIDAS, STERLING



BUILT TO LAST FROM THE WORD GO. CNC FROM A SINGLE BLOCK OF BRASS TO ENSURE ACCURACY TO NANOMETERS. REFINING THE IDEA OF A FLUSHBOLT, RETHINKING EVERY ELEMENT DOWN TO THE THROW AND THE EDGES. BOLT REPRESENTS THE PINNACLE OF PRECISION IN DOOR HARDWARE, MOVING WELL BEYOND WHAT IS REQUIRED, TO SETTING A NEW NORMAL. SETTING A NEW STANDARD FOR FLUSHBOLTS.

KONNER BOLT ISN'T JUST HARDWARE, IT'S A MANIFESTO. CRAFTED FROM A SINGLE BLOCK OF BRASS, SCULPTED BY CNC PRECISION DOWN TO THE NANOMETER, IT REWRITES THE RULES OF WHAT A FLUSHBOLT CAN BE. WE DIDN'T JUST REFINE, WE REIMAGINED. EVERY THROW, EVERY EDGE, WHISPERS A STORY OF RELENTLESS PURSUIT OF PERFECTION.



RAVEN



MIDAS



STERLING



KONNER
AXON



AXON

PIVOT SYSTEM



MAXIMUM ADJUSTED DOOR WEIGHT: 120 KG

FITTING INSTRUCTIONS

DOOR MORTICING:

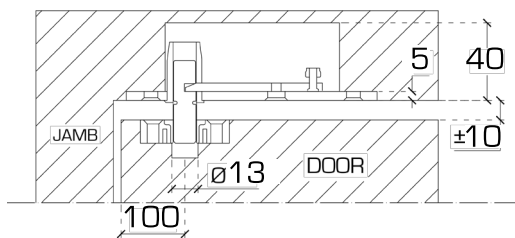
POSITION THE TOP AND BOTTOM PIVOT CENTRES 33MM (MINIMUM) FROM THE PIVOT EDGE. MORTICE AS PER THE DIMENSIONS PROVIDED.

FRAME MORTICING:

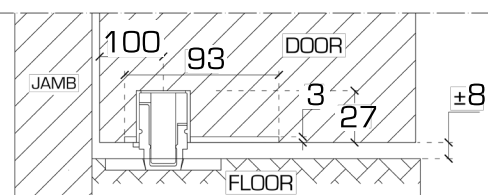
USING THE DIMENSIONS PROVIDED; MORTICE THE TOP FRAME TO ACCEPT THE TOP PIVOT ASSEMBLY.

WITH THE TOP PIVOT ASSEMBLY FITTED, UNSCREW THE TOP FRAME RELEASE SCREW. DO NOT APPLY EXCESSIVE FORCE AND THE USE OF POWER DRIVERS IS NOT RECOMMENDED.

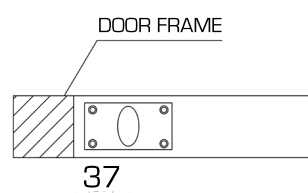
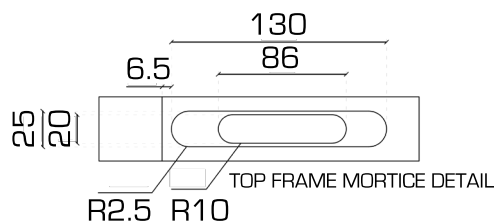
DO NOT REMOVE THE RELEASE SCREW RETAINING NUT ENSURE THE TOP PIVOT PIN RISES AND FALLS FREELY BY HAND



SECTION THROUGH
TOP PIVOT ASSEMBLY



SECTION THROUGH
BOTTOM PIVOT ASSEMBLY



NOTE: IT IS RECOMMENDED TO FIT THE DOOR IN THE FULLY OPEN POSITION.

PRIOR TO FITTING THE DOOR, ENSURE THE ELLIPTICAL CAM ON THE UNDERSIDE OF THE DOOR IS CORRECTLY ROTATED TO THE RAISED POSITION AND ALIGNED WITH THE BASE PLATE ELLIPSE. THIS IS TO ENSURE CORRECT OPERATION OF THE HINGE. LIFT THE DOOR ONTO THE BASE PLATE, ALIGNING THE TWO ELLIPTICAL PROFILES. AT THE TOP OF THE DOOR; PUSH THE RELEASE SCREW UP TO RETRACT THE TOP PIVOT PIN; POSITIONING THE DOOR SO THAT THE TOP PIVOT PIN LOCATES WITH THE DOOR PLATE BUSHING.

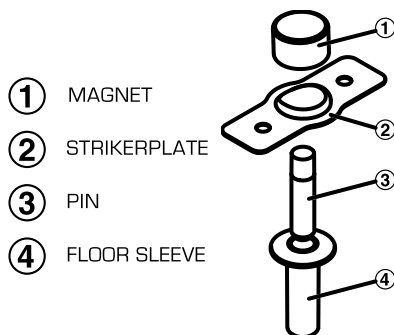
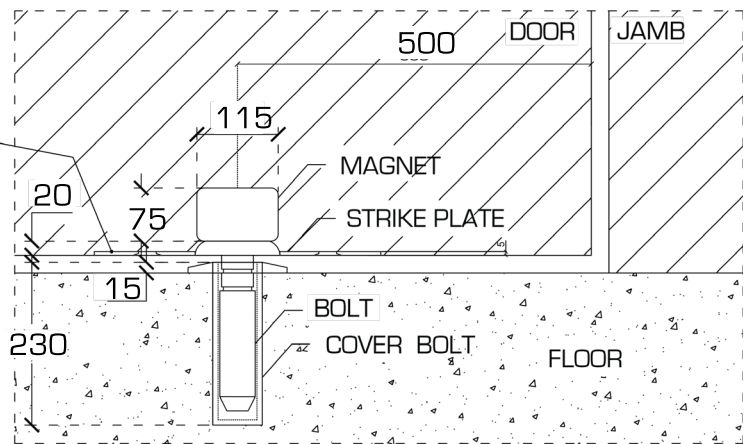
ALLOW THE TOP PIVOT PIN TO DROP INTO THE BUSH. TIGHTENING THE RELEASE SCREW UNTIL IT STOPS - ENSURE THE GREEN O-RING IS VISIBLE ON THE TOP PIVOT PIN. CHECK THE RELEASE SCREW IS FULLY TIGHTENED.

KONNER
KONNER



The technical drawing consists of two views of the door lock assembly:

- Top View (Side View):** Shows the lock body mounted on a door. The door is indicated by a hatched area. The lock body is a rectangular plate with a central circular opening. The width of the lock body is dimensioned as 135. The distance from the left edge of the lock body to the center of the circular opening is dimensioned as 405. The word "DOOR" is written below the hatched area. Arrows labeled "OPEN" and "CLOSE" indicate the direction of door movement.
- Bottom View (Front View):** Shows the lock body from the front. The lock body is a rectangular plate with a central circular opening. The width of the lock body is dimensioned as 135. The distance from the left edge of the lock body to the center of the circular opening is dimensioned as 405. The word "DOOR" is written below the hatched area. Arrows labeled "OPEN" and "CLOSE" indicate the direction of door movement.



- ✔ SUITABLE FOR DOOR THICKNESS:
MINIMUM 35MM.
- ✔ STRONG MAGNETIC HOLD:
28.4N [2.9KG/6.4LB] FORCE.

- ✓ FULLY CONCEALED:
INTEGRATES SEAMLESSLY INTO YOUR DOOR,
MAINTAINING A CLEAN LOOK.
- ✓ HOLD-OPEN FEATURE:
KEEPS YOUR DOOR SECURELY OPEN, PREVENTING
ACCIDENTAL CLOSURES.
- ✓ SAFE AND PRACTICAL:
AVOIDS DOOR AND WALL DAMAGE WITH ITS GENTLE
MAGNETIC CATCH.
- ✓ EASY INSTALLATION:
COMES WITH EVERYTHING NEEDED FOR A QUICK SETUP.

KONNER
MAGNETA

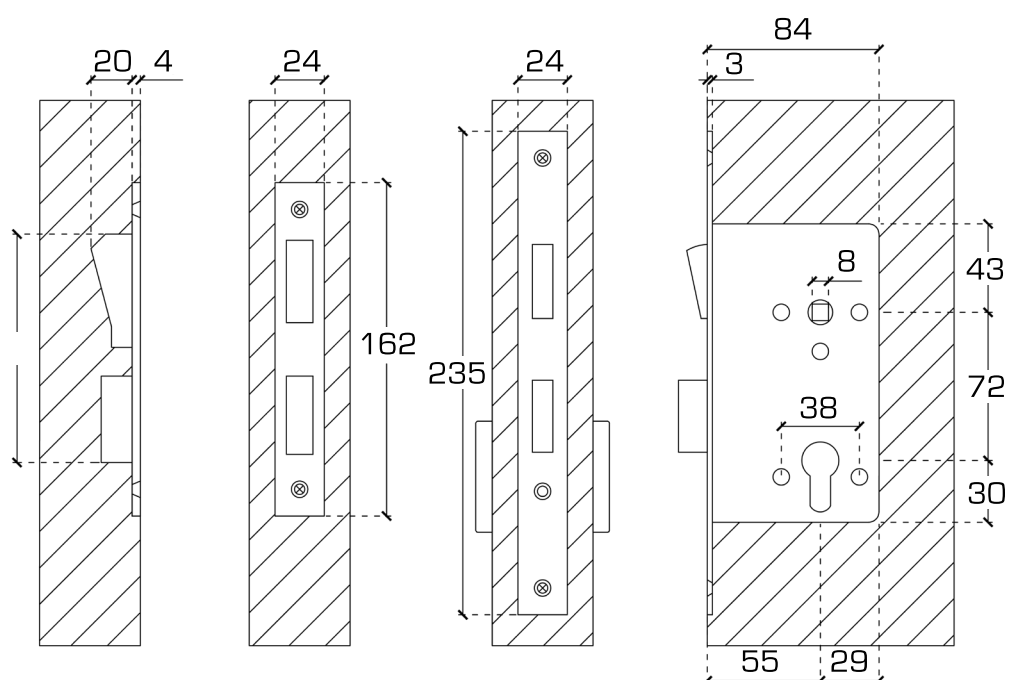


MAGNETA

MAGNETIC DOOR LOCK



DISCOVER THE CUTTING-EDGE KONNER MAGNETA, A MAGNETIC LATCH LOCKING SYSTEM TRANSFORMING THE WAY DOORS ARE SECURED, BOTH INDOORS AND OUTDOORS. ITS PIONEERING MAGNETIC TECHNOLOGY OFFERS A SECURE, SILENT OPERATION THAT ERADICATES THE FAMILIAR NOISE OF TRADITIONAL LATCHES. THE RESULT IS A WHISPER-QUIET CLOSURE, SETTING A NEW STANDARD IN DOOR LOCKING EFFICIENCY.



KONNER
ECLIPSE



KONNER ECLIPSE

FOR INTERNAL GLASS DOORS
AND SHOWERS. GLASS TO GLASS

KONNER



LOAD CAPACITY : 70 - 100 KG

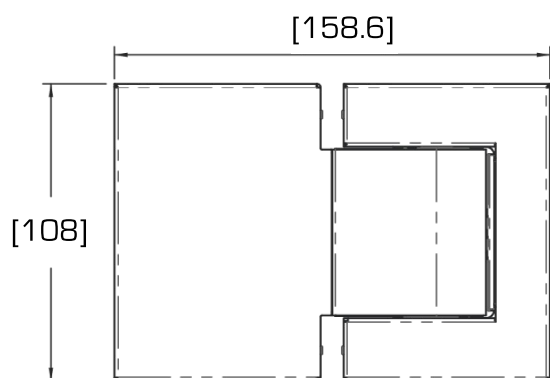
MAX GLASS DOOR WIDTH : 1000 MM

GLASS DOOR THICKNESS : 8 - 14 MM

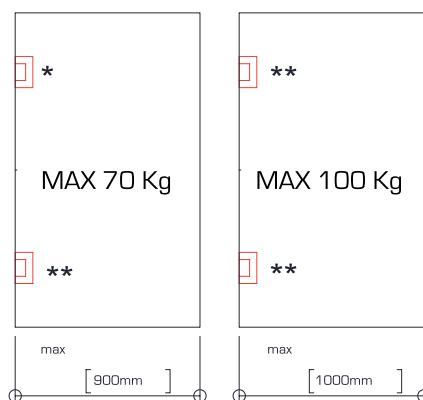
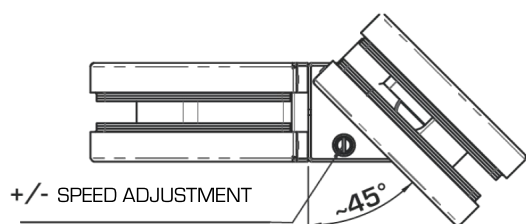
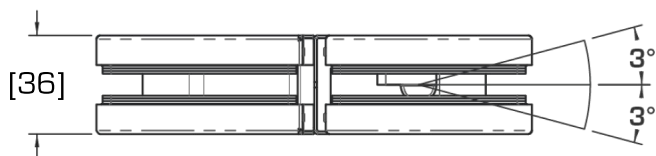
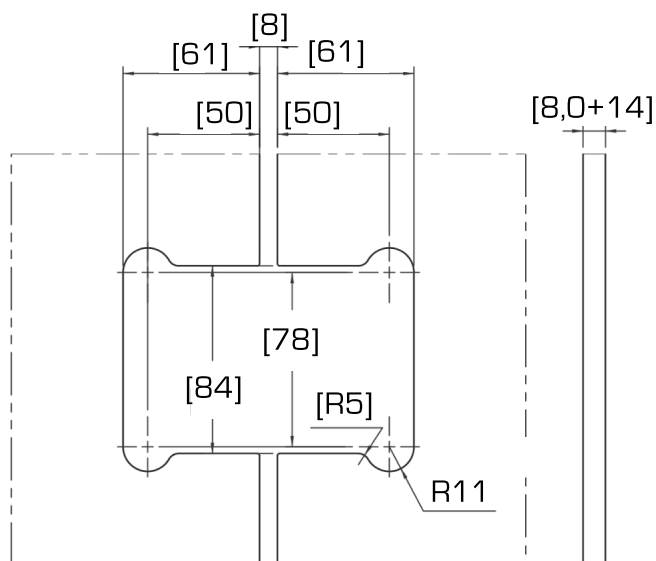
OPENING ANGLE : 180°

COMPOSITION : ALUMINIUM

FINISHING : RAVEN
ANTIQUE
MIDAS
PLATINUM



ANGLE ADJUSTMENT



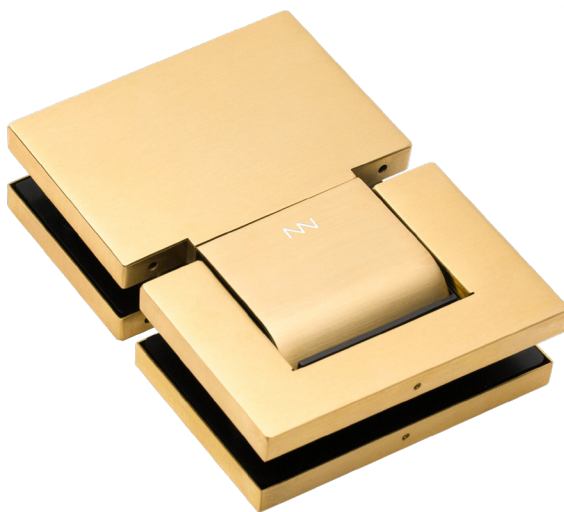
KONNER



RAVEN



ANTIQUE



MIDAS



PLATINUM

KONER
ECLIPSE



KONNER ECLIPSE

FOR INTERNAL GLASS DOORS
AND SHOWERS. GLASS TO WALL

KONNER



LOAD CAPACITY : 70 - 100 KG

MAX GLASS DOOR WIDTH : 1000 MM

GLASS DOOR THICKNESS : 8 - 14 MM

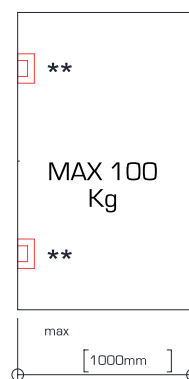
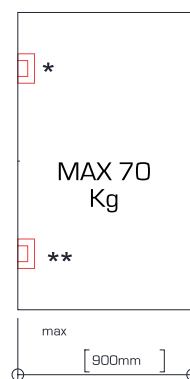
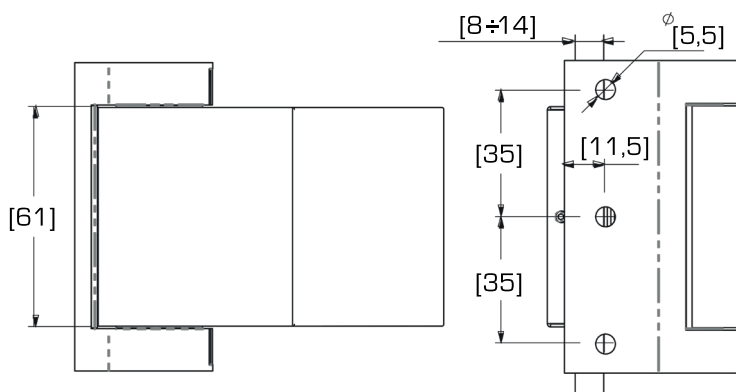
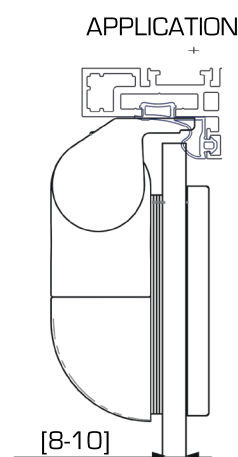
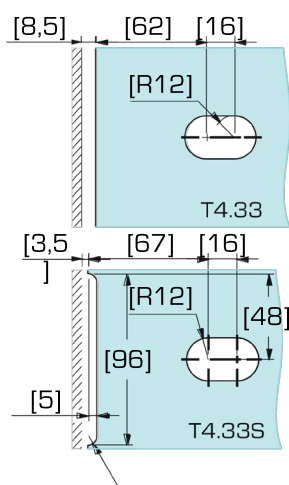
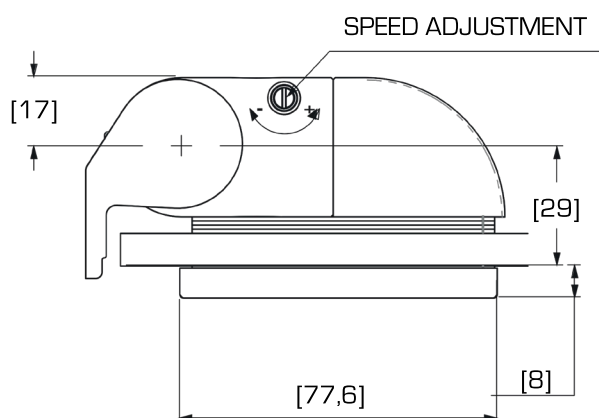
OPENING ANGLE : 180°

COMPOSITION : ALUMINIUM

FINISHING : RAVEN

PLATINUM

STERLING



KONNER



RAVEN



PLATINUM



STERLING

Calculating Door Weight

Art is beautiful, and even more beautiful when it works. The foundation of Konner is based on an accurate calculation of door weights. These formulas provide a conservative estimate of your door weights and allow an initial insight into your door hardware requirements.

	Door Volume (Length x Width x Thickness)
	X
Door Weight =	Material Factor (Timbre = 1.0) (Glass = 2.5)

Volume Calculation: Length 2.8m x Width 1.0m x Thickness 0.05m = 140kg

Timbre Example: Volume of 140kg x Timbre Factor 1.0 = 140kg

Glass Example: Volume of 140kg x Glass Factor 2.5 = 350kg.

Adjusted Door Weight

A common oversight is the lack of adjustment when additional hardware are being specified. These Rule of Thumbs were derived from our experience in the industry and are used to ensure appropriate specification of hardware for your requirements.

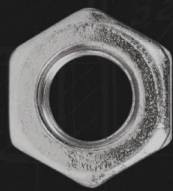
	Door Weight
	+
Actual Door Weight =	20% for Door Closer 50% for Door Closer with Backset 10% for Doors Anticipating High Traffic Critical Width Factor (See Next Page)

For a door weight of 140kg with a closer, we will add 20% to derive the final adjusted door weight.

Door Weight (140kg) + Closer Adjustment 20% (28kg) = Adjusted Door Weight (168kg)

Factors are additive, if this door has a closer and is expecting high traffic, we will adjust a further 10%:

Door Weight (140kg) + Closer Adjustment 20% (28kg) + Traffic Adjustment 10% (14kg) = Adjusted Door Weight (182kg)



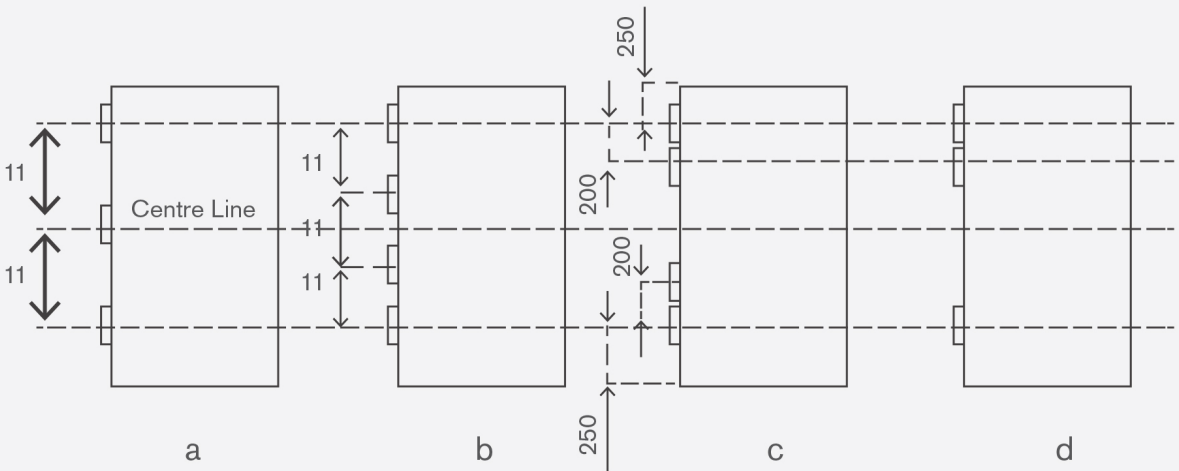
Critical Width Factor

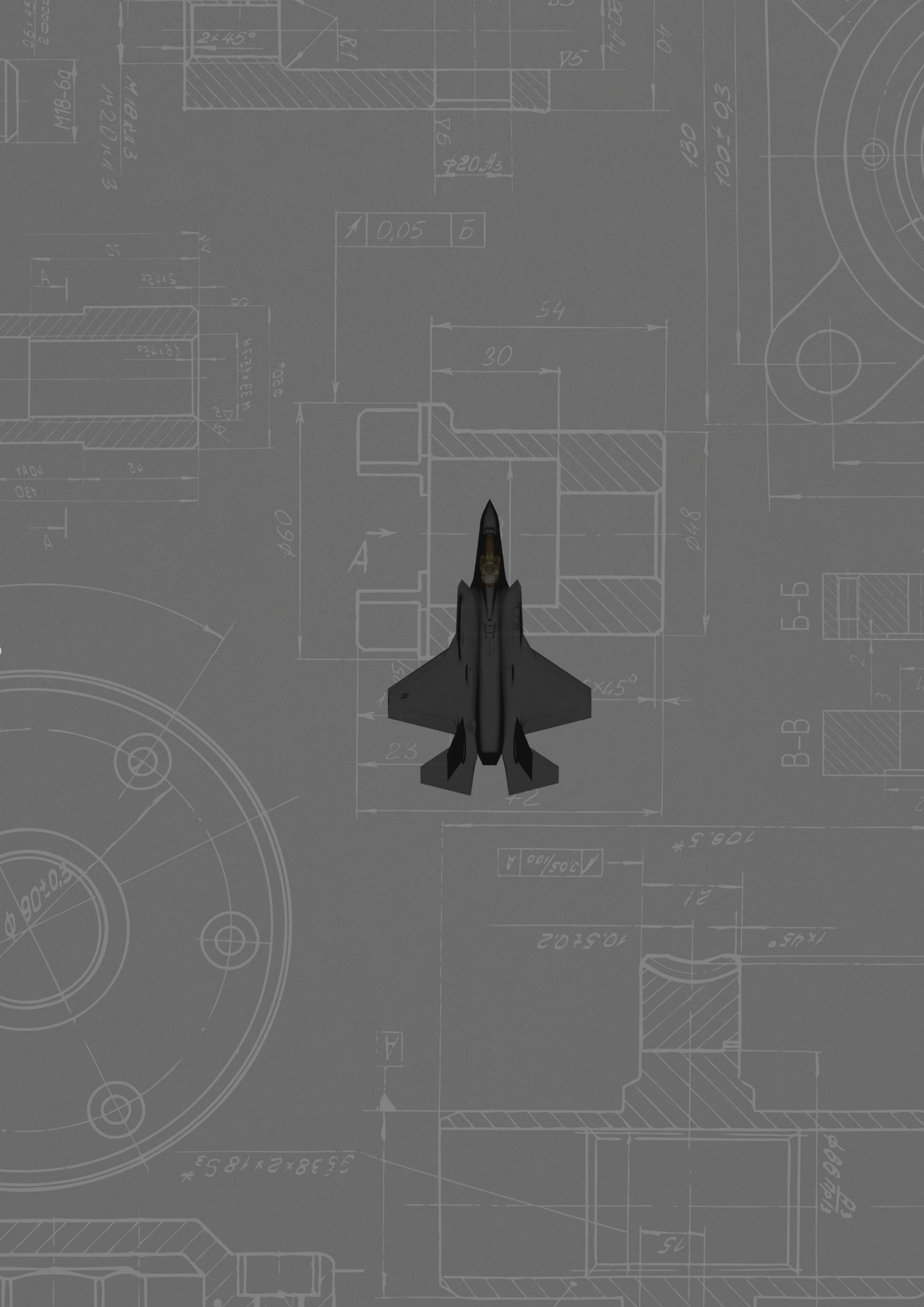
With an increase in architectural requirements for wider doors, Konner uses the Critical Width Factor (CWF). The CWF is a simplified and conservative scale to cater for extra wide doors to prevent hinge failure. However, as a general Rule of Thumb (ROT), do not exceed widths of 1100mm for wall hinges and 1400mm for floor hinges.

Door Height / Door Width				
Critical Width Factor	Height (mm)	Width (mm)	Critical Width Factor	Critical Width Weight Adjustment
	2400	1200	2.0	+0%
	2400	1263	1.9	+10%
	2400	1333	1.8	+20%
	2400	1411	1.7	+30%

Hinge Placement

Depending on the Adjusted Door Weight, the chart shows the recommended placement of 2, 3 or 4 hinges. These placements are recommendations and could be overridden by other requirements. Call a Konner consultant if in doubt.





0,05 5

A

0,05/0,01 A

B-B

B-B

0,05/0,01 A



KONNER

WWW.KONNERPRECISION.COM